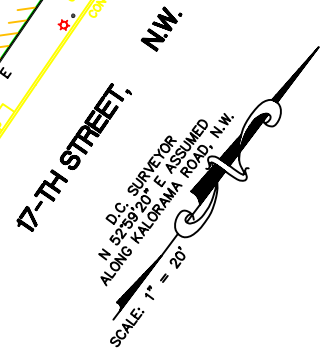
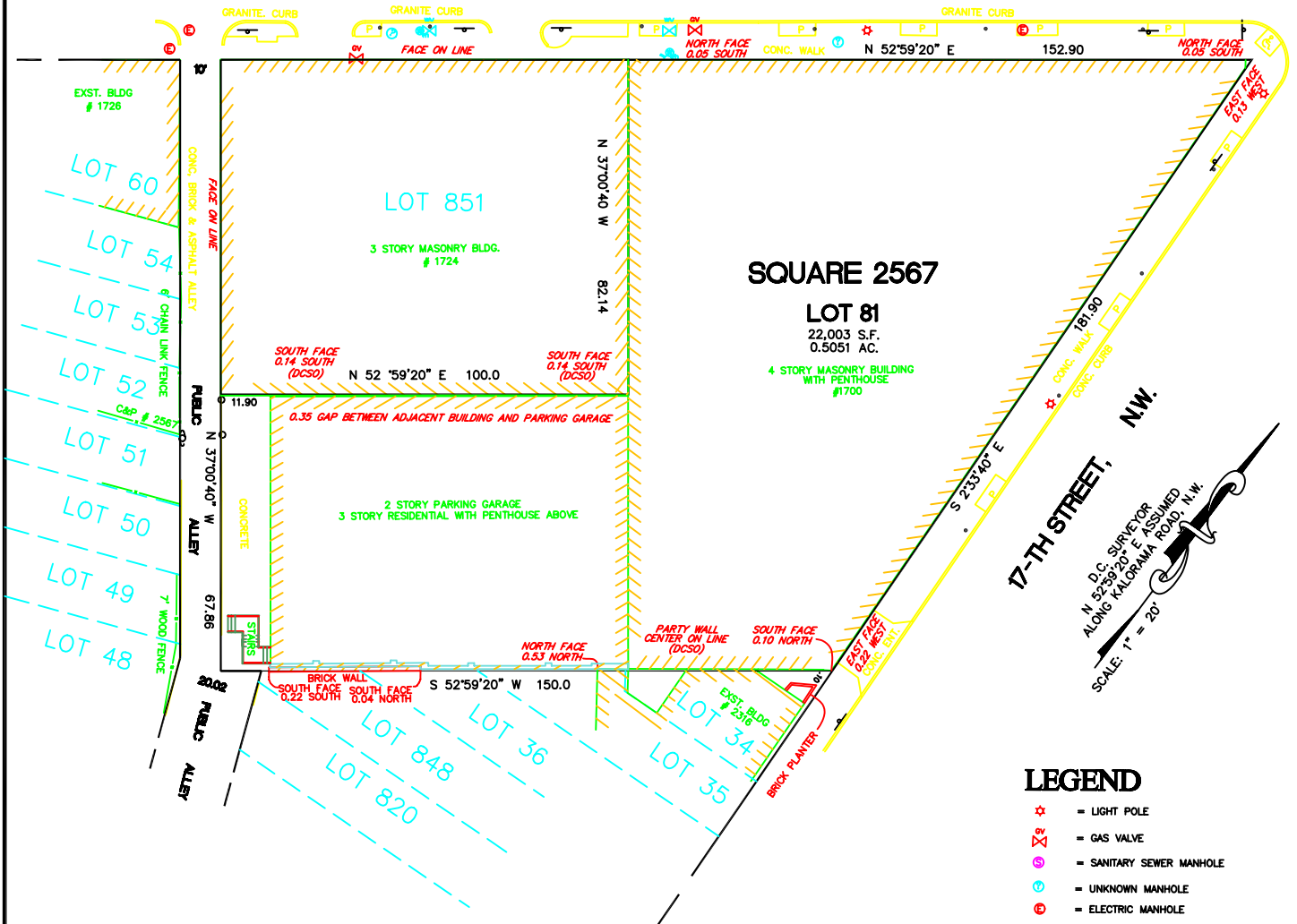




# PLAT OF CONDOMINIUM SUBDIVISION SQUARE 2567, LOT 81 1700 KALORAMA LOFTS, A CONDOMINIUM

KALORAMA ROAD, N.W.



## LEGEND

- = LIGHT POLE
- = GAS VALVE
- = SANITARY SEWER MANHOLE
- = UNKNOWN MANHOLE
- = ELECTRIC MANHOLE
- = WATER METER
- = WATER VALVE
- = FIRE DEPT. CONN.
- = CHAIN LINK FENCE
- = WOOD FENCE
- = SIGN
- = BOLLARD
- = PARKING METER
- = PLANTER BOX (TYP.)
- = DC SURVEYORS OFFICE
- = GENERAL COMMON ELEMENT
- = LIMITED COMMON ELEMENT
- = FLOOR ELEVATION
- = CEILING ELEVATION
- = CONVERTIBLE LAND
- = LIMITED COMMON ELEMENT RESIDENTIAL
- = LIMITED COMMON ELEMENT COMMERCIAL
- = COMMON ELEMENT STORAGE

### NOTES:

- 1) PROPERTY LINE DESIGNATION AND BUILDING LOCATION ARE FROM THE RECORDS FROM THE OFFICE OF THE SURVEYOR OF THE DISTRICT OF COLUMBIA. LOT 81 RECORDED IN SUBDIVISION BOOK 179 PAGE 36.
- 2) ALL BUILDING DIMENSIONS SHOWN HEREON ARE FROM FIELD MEASUREMENTS BY MADDOX ENGINEERS & SURVEYORS, INC.

**MADDOX**  
INCORPORATED  
ENGINEERS • SURVEYORS

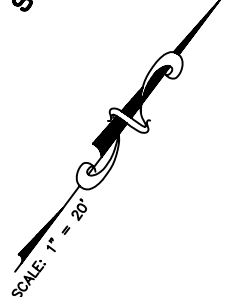
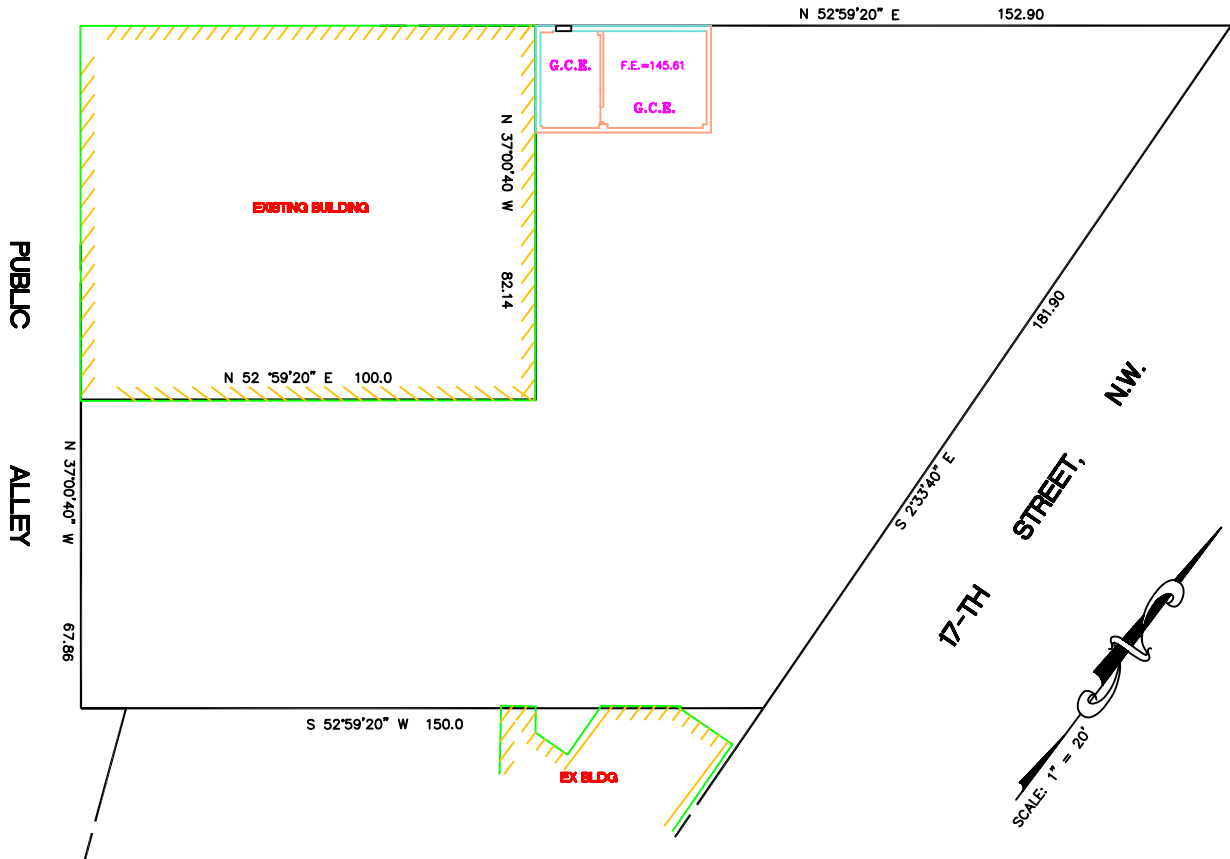
100 PARK AVENUE  
ROCKVILLE, MARYLAND 20850-2699  
(301) 762-9001

# PLANS OF CONDOMINIUM SUBDIVISION

## SQUARE 2567, LOT 81

### 1700 KALORAMA LOFTS, A CONDOMINIUM

KALORAMA ROAD, N.W.



### BASEMENT FLOOR

#### NOTES

- ALL UNIT DIMENSIONS SHOWN HEREON ARE APPROXIMATE, AND ARE BASED ON PHYSICAL MEASUREMENTS TAKEN WITHIN THE APARTMENTS TO THE INTERIOR FINISHED SURFACES OF WALLS. ACTUAL UNIT BOUNDARIES, HOWEVER, MAY EXTEND TO INCLUDE SUCH UNMEASURED ITEMS AS DRYWALL, PLASTER, FLOORING, DOORS, AND WINDOWS. SEE CONDOMINIUM DECLARATION FOR SPECIFIC DETAILS.

#### LEGEND

- G.C.E. = GENERAL COMMON ELEMENT
- L.C.E. = LIMITED COMMON ELEMENT
- F.E. = FLOOR ELEVATION
- C.E. = CEILING ELEVATION
- C.L. = CONVERTIBLE LAND
- L.C.E.R. = LIMITED COMMON ELEMENT RESIDENTIAL
- L.C.E.C. = LIMITED COMMON ELEMENT COMMERCIAL
- C.E.S. = COMMON ELEMENT STORAGE

**MADDOX**  
INCORPORATED  
ENGINEERS • SURVEYORS

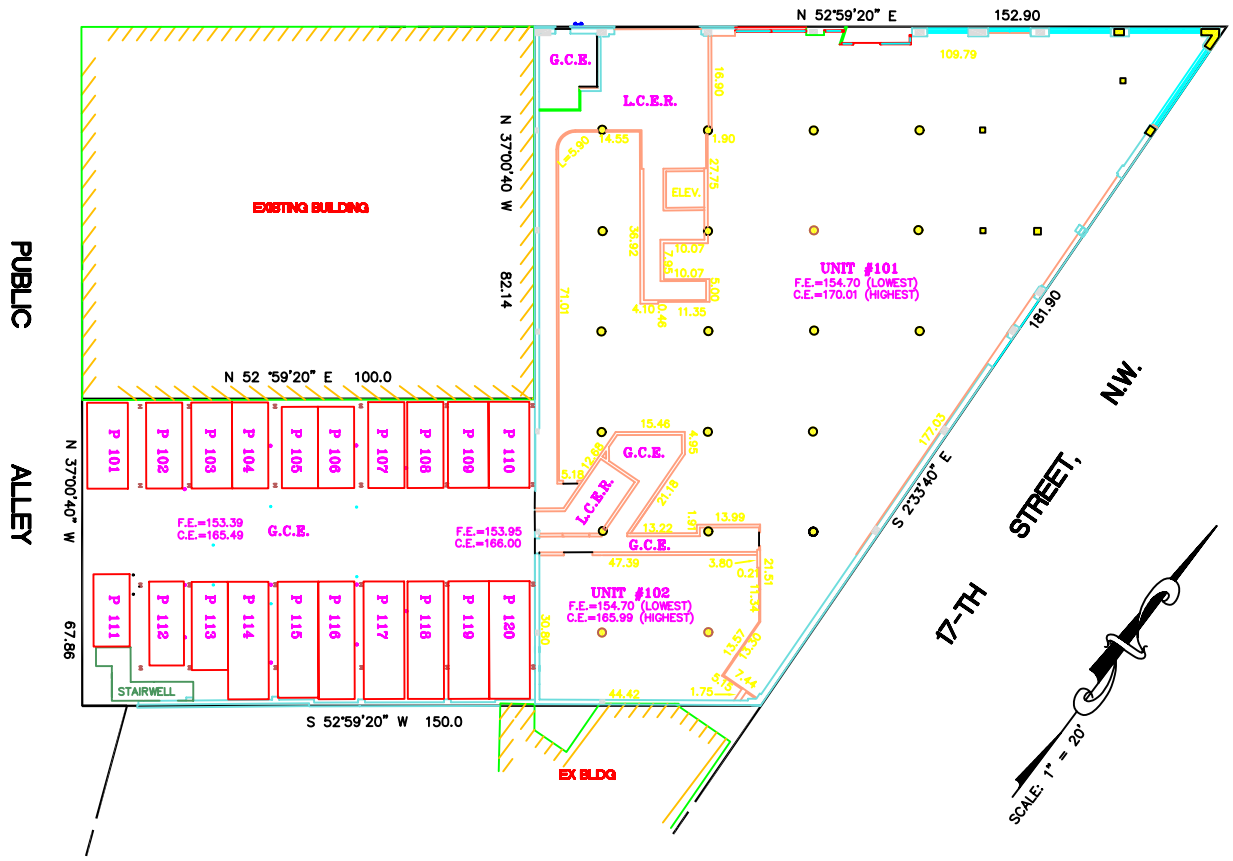
100 PARK AVENUE  
ROCKVILLE, MARYLAND 20850-2699  
(301) 762-9001

# PLANS OF CONDOMINIUM SUBDIVISION

## SQUARE 2567, LOT 81

### 1700 KALORAMA LOFTS, A CONDOMINIUM

KALORAMA ROAD, N.W.



**NOTES**

- ALL UNIT DIMENSIONS SHOWN HEREON ARE APPROXIMATE, AND ARE BASED ON PHYSICAL MEASUREMENTS TAKEN WITHIN THE APARTMENTS TO THE INTERIOR FINISHED SURFACES OF WALLS. ACTUAL UNIT BOUNDARIES, HOWEVER, MAY EXTEND TO INCLUDE SUCH UNMEASURED ITEMS AS DRYWALL, PLASTER, FLOORING, DOORS, AND WINDOWS. SEE CONDOMINIUM DECLARATION FOR SPECIFIC DETAILS.

**LEGEND**

- G.C.E. = GENERAL COMMON ELEMENT
- L.C.E. = LIMITED COMMON ELEMENT
- F.E. = FLOOR ELEVATION
- C.E. = CEILING ELEVATION
- C.L. = CONVERTIBLE LAND
- L.C.E.R. = LIMITED COMMON ELEMENT RESIDENTIAL
- L.C.E.C. = LIMITED COMMON ELEMENT COMMERCIAL
- C.E.S. = COMMON ELEMENT STORAGE
- P ### = PARKING UNIT
- □ = COLUMNS

FIRST FLOOR

UNITS 101 - 102 &  
P101 - P120

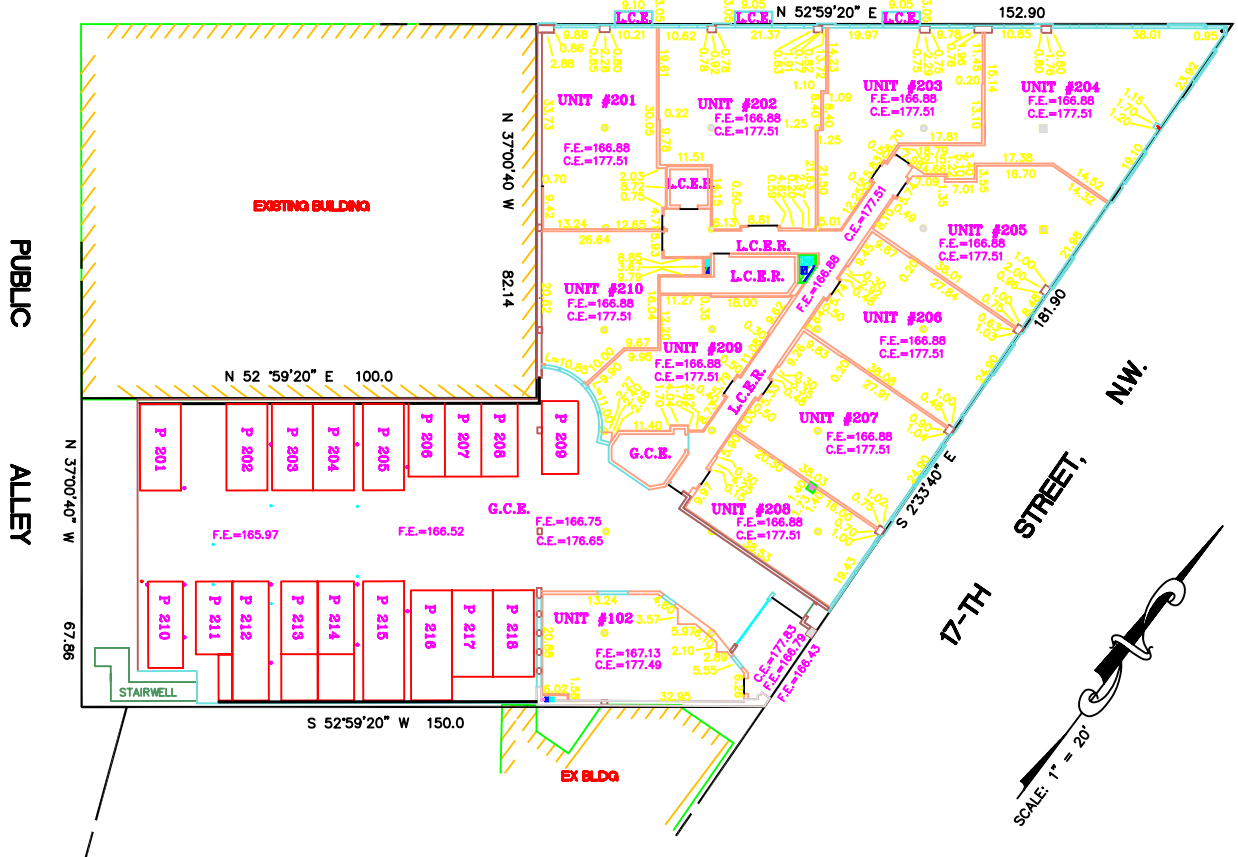
**MADDOX**  
INCORPORATED  
ENGINEERS • SURVEYORS  
100 PARK AVENUE  
ROCKVILLE, MARYLAND 20850-2699  
(301) 762-9001

# PLANS OF CONDOMINIUM SUBDIVISION

## SQUARE 2567, LOT 81

### 1700 KALORAMA LOFTS, A CONDOMINIUM

KALORAMA ROAD, N.W.



**MADDOX**  
INCORPORATED  
ENGINEERS • SURVEYORS  
100 PARK AVENUE  
ROCKVILLE, MARYLAND 20850-2899  
(301) 762-9001

SECOND FLOOR  
UNITS 102, 201 - 210 &  
P201 - P218

**NOTES**

1. ALL UNIT DIMENSIONS SHOWN HEREON ARE APPROXIMATE, AND ARE BASED ON PHYSICAL MEASUREMENTS TAKEN WITHIN THE APARTMENTS TO THE INTERIOR FINISHED SURFACES OF WALLS. ACTUAL UNIT BOUNDARIES, HOWEVER, MAY EXTEND TO INCLUDE SUCH UNMEASURED ITEMS AS DRYWALL, PLASTER, FLOORING, DOORS, AND WINDOWS. SEE CONDOMINIUM DECLARATION FOR SPECIFIC DETAILS.

**LEGEND**

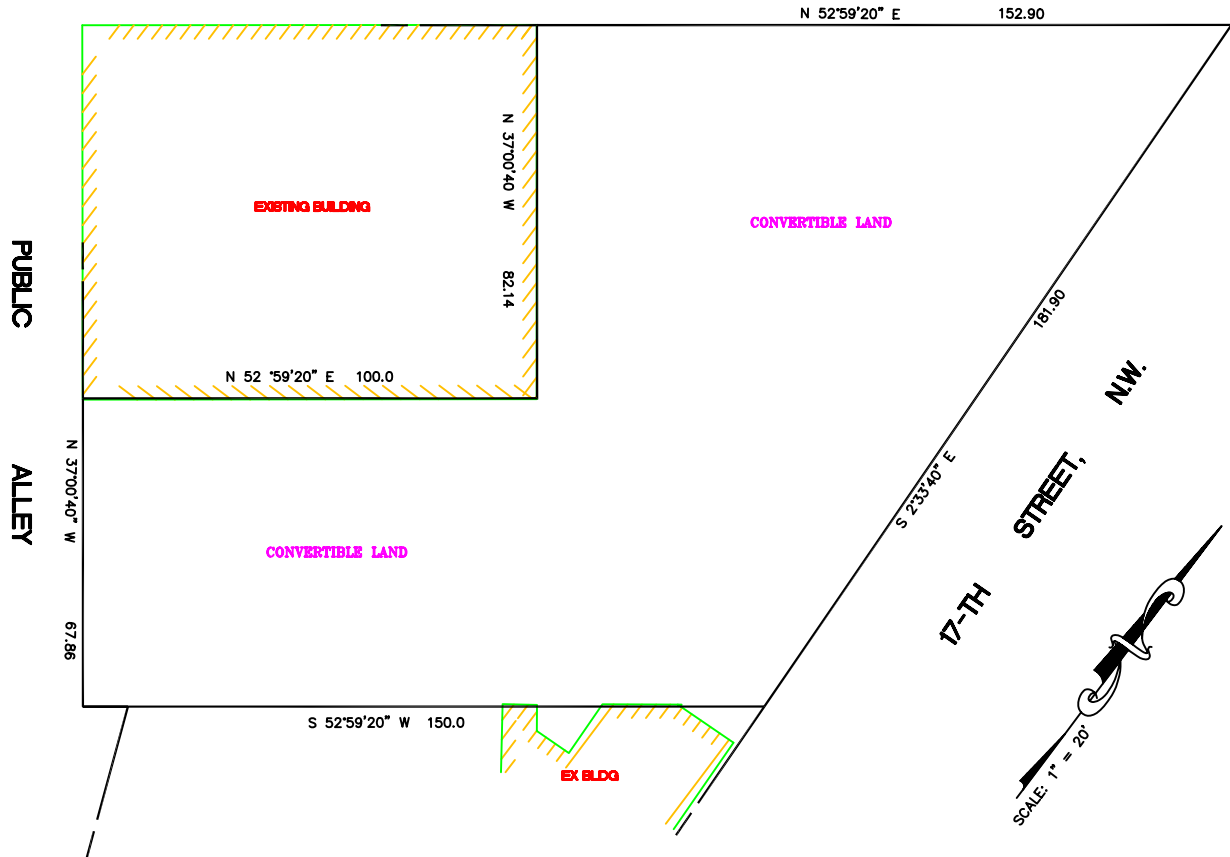
- G.C.E. = GENERAL COMMON ELEMENT
- L.C.E. = LIMITED COMMON ELEMENT
- F.E. = FLOOR ELEVATION
- C.E. = CEILING ELEVATION
- C.L. = CONVERTIBLE LAND
- L.C.E.R. = LIMITED COMMON ELEMENT RESIDENTIAL
- L.C.E.C. = LIMITED COMMON ELEMENT COMMERCIAL
- C.E.S. = COMMON ELEMENT STORAGE
- P ### = PARKING UNIT
- □ = COLUMNS

# PLANS OF CONDOMINIUM SUBDIVISION

## SQUARE 2567, LOT 81

### 1700 KALORAMA LOFTS, A CONDOMINIUM

KALORAMA ROAD, N.W.



THIRD FLOOR AND  
THIRD FLOOR  
ANNEX  
CONVERTIBLE LAND

#### NOTES

1. ALL UNIT DIMENSIONS SHOWN HEREON ARE APPROXIMATE, AND ARE BASED ON PHYSICAL MEASUREMENTS TAKEN WITHIN THE APARTMENTS TO THE INTERIOR FINISHED SURFACES OF WALLS. ACTUAL UNIT BOUNDARIES, HOWEVER, MAY EXTEND TO INCLUDE SUCH UNMEASURED ITEMS AS DRYWALL, PLASTER, FLOORING, DOORS, AND WINDOWS. SEE CONDOMINIUM DECLARATION FOR SPECIFIC DETAILS.

#### LEGEND

- G.C.E. = GENERAL COMMON ELEMENT
- L.C.E. = LIMITED COMMON ELEMENT
- F.E. = FLOOR ELEVATION
- C.E. = CEILING ELEVATION
- C.L. = CONVERTIBLE LAND
- L.C.E.R. = LIMITED COMMON ELEMENT RESIDENTIAL
- L.C.E.C. = LIMITED COMMON ELEMENT COMMERCIAL
- C.E.S. = COMMON ELEMENT STORAGE

**MADDOX**  
INCORPORATED  
ENGINEERS • SURVEYORS

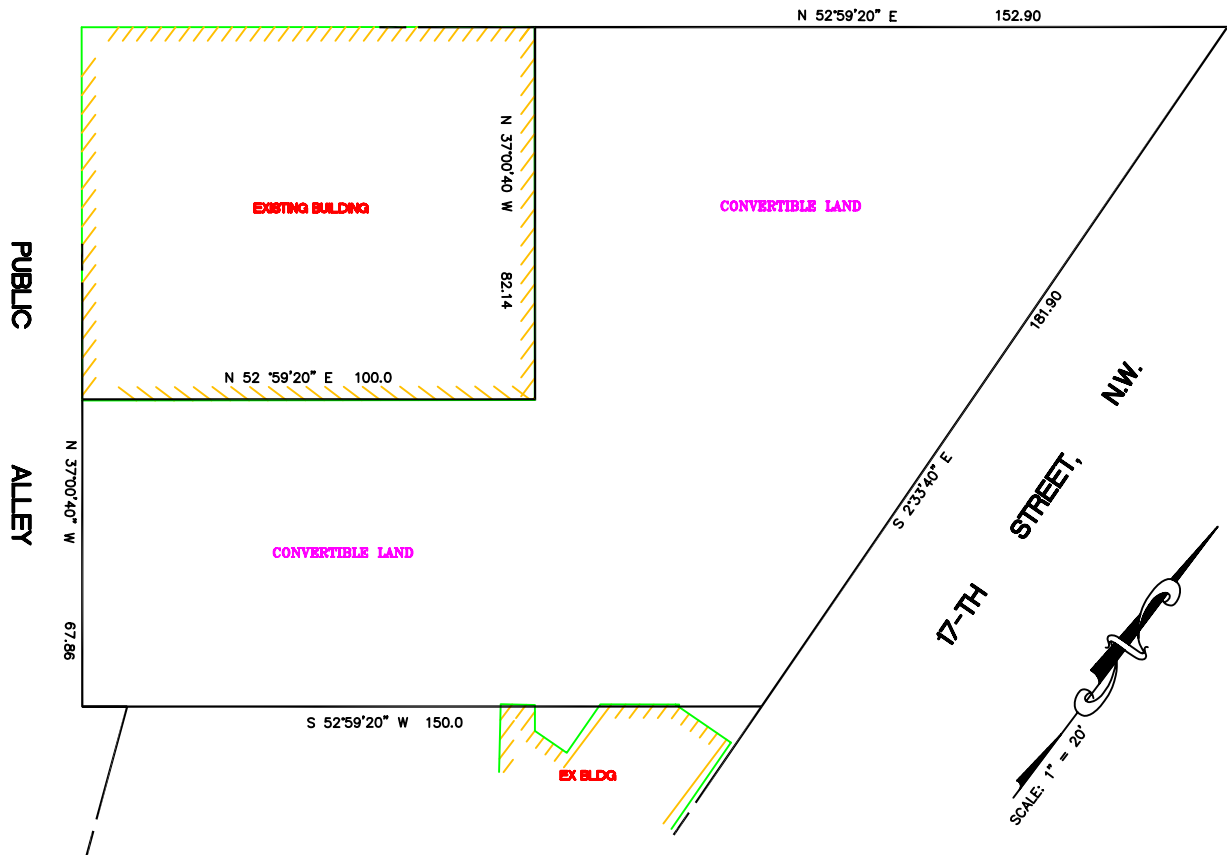
100 PARK AVENUE  
ROCKVILLE, MARYLAND 20850-2699  
(301) 762-9001

# PLANS OF CONDOMINIUM SUBDIVISION

## SQUARE 2567, LOT 81

### 1700 KALORAMA LOFTS, A CONDOMINIUM

KALORAMA ROAD, N.W.



FOURTH FLOOR  
AND FOURTH  
FLOOR ANNEX  
CONVERTIBLE LAND

#### NOTES

1. ALL UNIT DIMENSIONS SHOWN HEREON ARE APPROXIMATE, AND ARE BASED ON PHYSICAL MEASUREMENTS TAKEN WITHIN THE APARTMENTS TO THE INTERIOR FINISHED SURFACES OF WALLS. ACTUAL UNIT BOUNDARIES, HOWEVER, MAY EXTEND TO INCLUDE SUCH UNMEASURED ITEMS AS DRYWALL, PLASTER, FLOORING, DOORS, AND WINDOWS. SEE CONDOMINIUM DECLARATION FOR SPECIFIC DETAILS.

#### LEGEND

- G.C.E. = GENERAL COMMON ELEMENT
- L.C.E. = LIMITED COMMON ELEMENT
- F.E. = FLOOR ELEVATION
- C.E. = CEILING ELEVATION
- C.L. = CONVERTIBLE LAND
- L.C.E.R. = LIMITED COMMON ELEMENT RESIDENTIAL
- L.C.E.C. = LIMITED COMMON ELEMENT COMMERCIAL
- C.E.S. = COMMON ELEMENT STORAGE

**MADDOX**  
INCORPORATED  
ENGINEERS • SURVEYORS

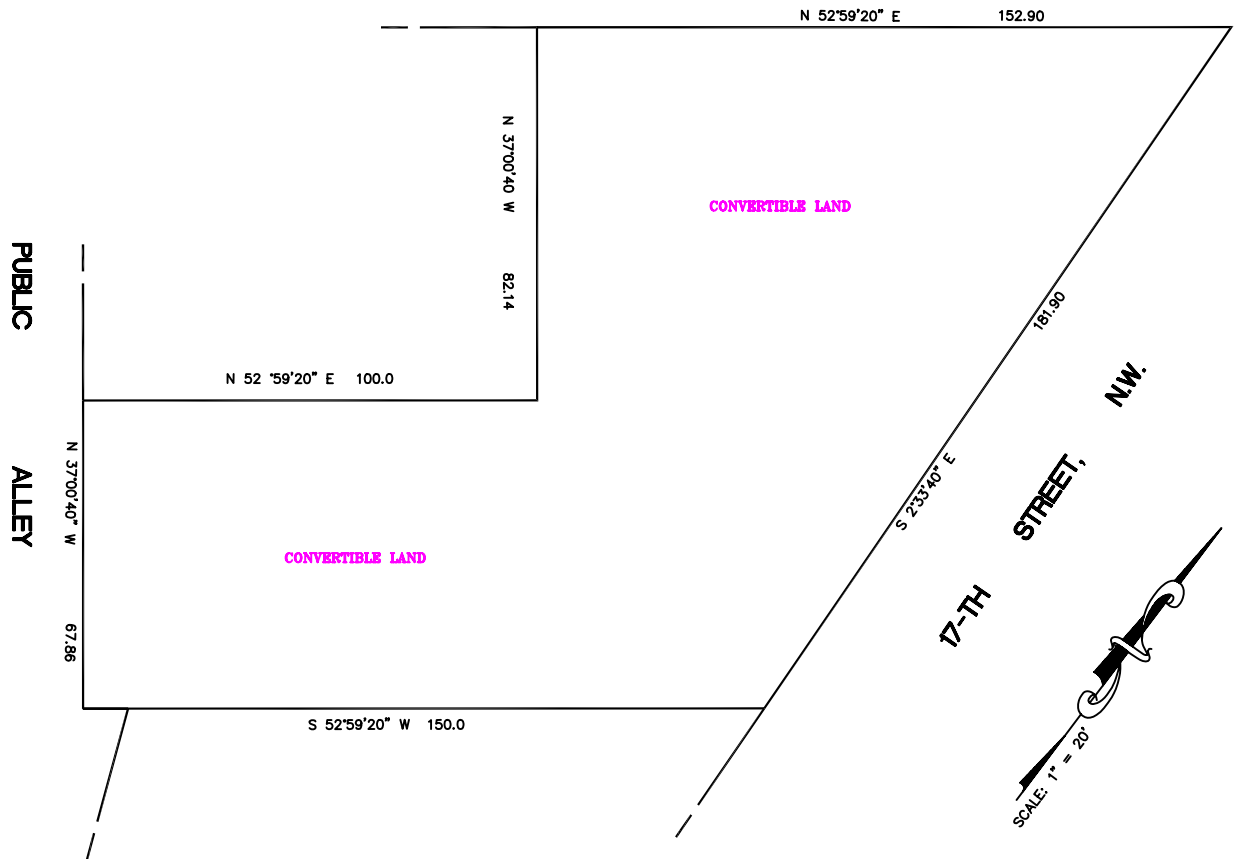
100 PARK AVENUE  
ROCKVILLE, MARYLAND 20850-2699  
(301) 762-9001

# PLANS OF CONDOMINIUM SUBDIVISION

## SQUARE 2567, LOT 81

### 1700 KALORAMA LOFTS, A CONDOMINIUM

KALORAMA ROAD, N.W.



PENTHOUSE AND  
FIFTH FLOOR  
ANNEX  
CONVERTIBLE LAND

#### NOTES

1. ALL UNIT DIMENSIONS SHOWN HEREON ARE APPROXIMATE, AND ARE BASED ON PHYSICAL MEASUREMENTS TAKEN WITHIN THE APARTMENTS TO THE INTERIOR FINISHED SURFACES OF WALLS. ACTUAL UNIT BOUNDARIES, HOWEVER, MAY EXTEND TO INCLUDE SUCH UNMEASURED ITEMS AS DRYWALL, PLASTER, FLOORING, DOORS, AND WINDOWS. SEE CONDOMINIUM DECLARATION FOR SPECIFIC DETAILS.

#### LEGEND

- G.C.E. = GENERAL COMMON ELEMENT
- L.C.E. = LIMITED COMMON ELEMENT
- F.E. = FLOOR ELEVATION
- C.E. = CEILING ELEVATION
- C.L. = CONVERTIBLE LAND
- L.C.E.R. = LIMITED COMMON ELEMENT RESIDENTIAL
- L.C.E.C. = LIMITED COMMON ELEMENT COMMERCIAL
- C.E.S. = COMMON ELEMENT STORAGE

**MADDOX**  
INCORPORATED  
ENGINEERS • SURVEYORS

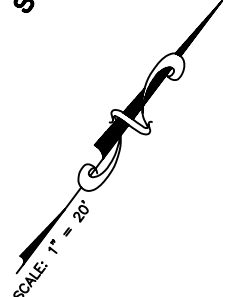
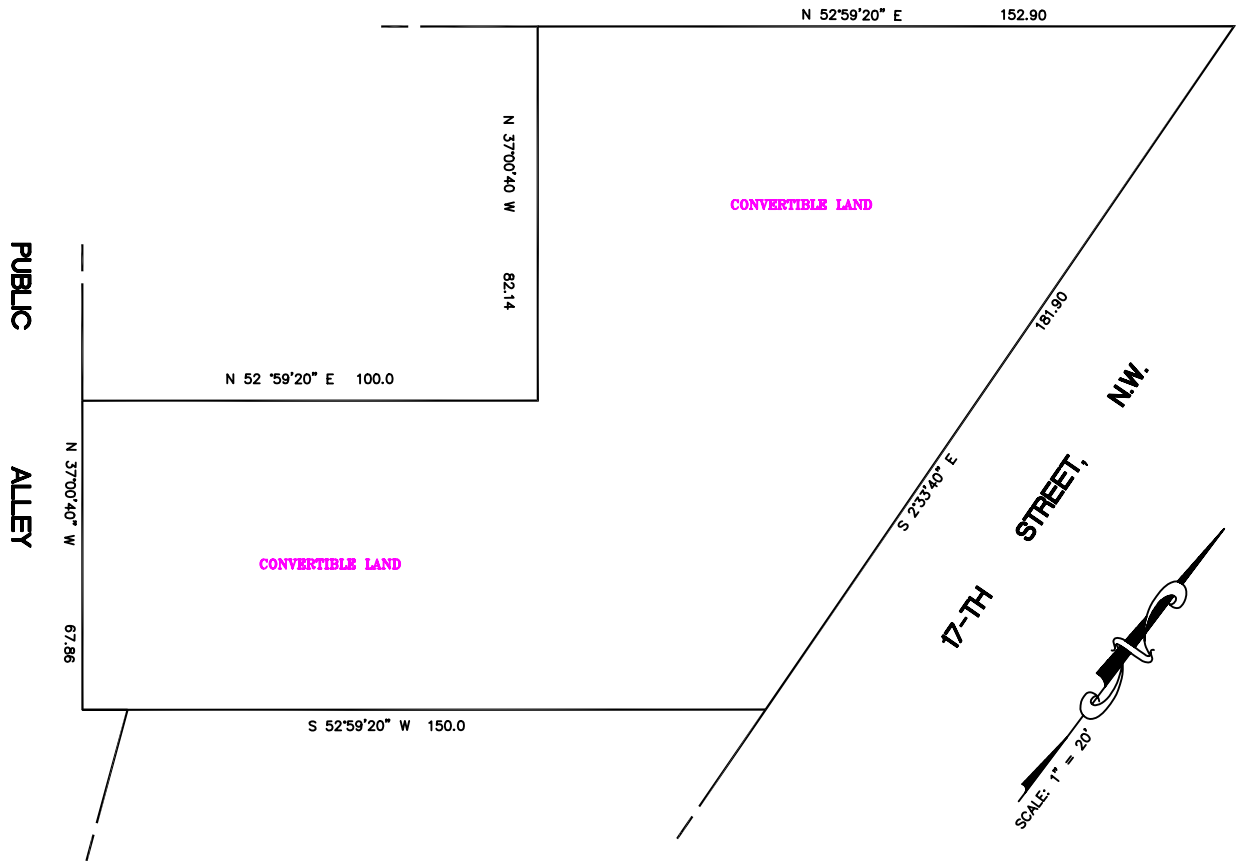
100 PARK AVENUE  
ROCKVILLE, MARYLAND 20850-2699  
(301) 762-9001

# PLANS OF CONDOMINIUM SUBDIVISION

## SQUARE 2567, LOT 81

### 1700 KALORAMA LOFTS, A CONDOMINIUM

KALORAMA ROAD, N.W.



ANNEX  
PENTHOUSE

CONVERTIBLE LAND

**NOTES**

- ALL UNIT DIMENSIONS SHOWN HEREON ARE APPROXIMATE, AND ARE BASED ON PHYSICAL MEASUREMENTS TAKEN WITHIN THE APARTMENTS TO THE INTERIOR FINISHED SURFACES OF WALLS. ACTUAL UNIT BOUNDARIES, HOWEVER, MAY EXTEND TO INCLUDE SUCH UNMEASURED ITEMS AS DRYWALL, PLASTER, FLOORING, DOORS, AND WINDOWS. SEE CONDOMINIUM DECLARATION FOR SPECIFIC DETAILS.

**LEGEND**

- G.C.E. = GENERAL COMMON ELEMENT
- L.C.E. = LIMITED COMMON ELEMENT
- F.E. = FLOOR ELEVATION
- C.E. = CEILING ELEVATION
- C.L. = CONVERTIBLE LAND
- L.C.E.R. = LIMITED COMMON ELEMENT RESIDENTIAL
- L.C.E.C. = LIMITED COMMON ELEMENT COMMERCIAL
- C.E.S. = COMMON ELEMENT STORAGE

**MADDOX**  
INCORPORATED  
ENGINEERS • SURVEYORS

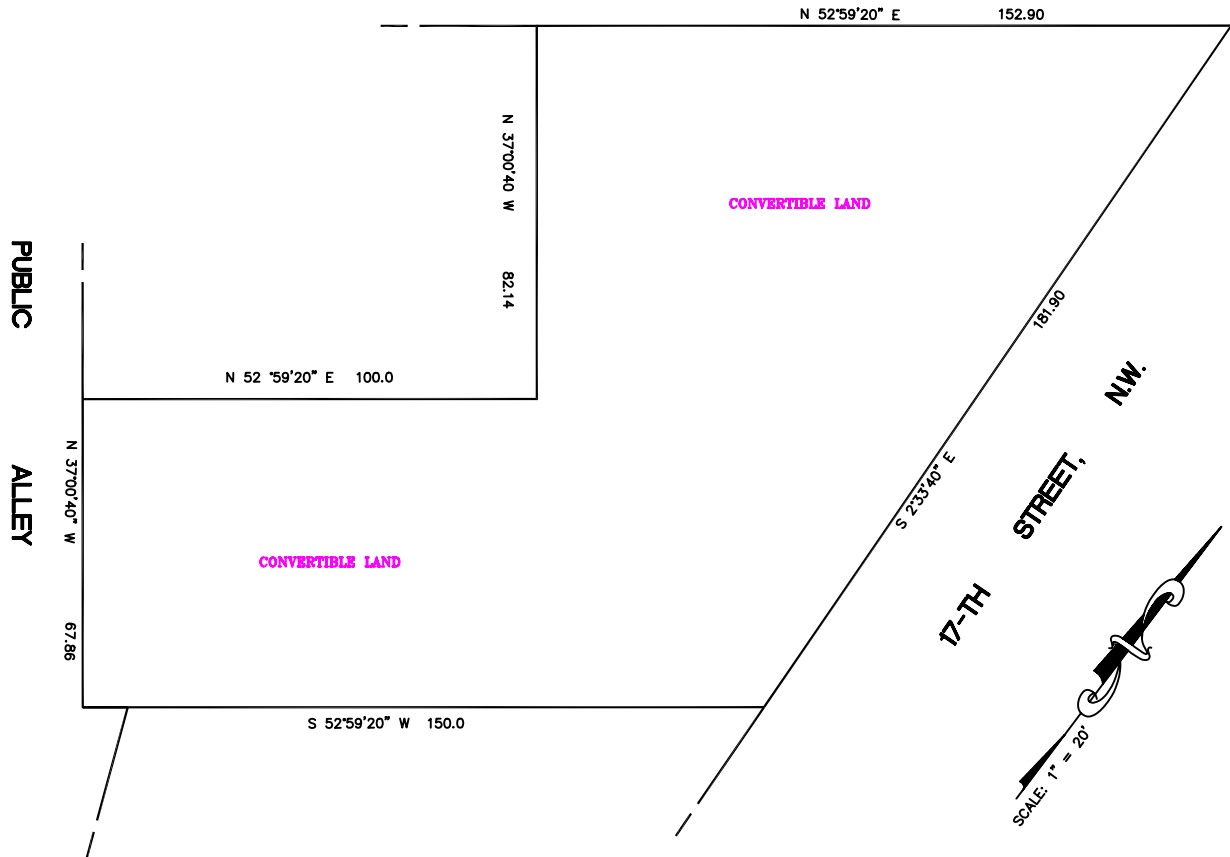
100 PARK AVENUE  
ROCKVILLE, MARYLAND 20850-2699  
(301) 762-9001

# PLANS OF CONDOMINIUM SUBDIVISION

## SQUARE 2567, LOT 81

### 1700 KALORAMA LOFTS, A CONDOMINIUM

KALORAMA ROAD, N.W.



## ANNEX ROOF TERRACE

### NOTES

1. ALL UNIT DIMENSIONS SHOWN HEREON ARE APPROXIMATE, AND ARE BASED ON PHYSICAL MEASUREMENTS TAKEN WITHIN THE APARTMENTS TO THE INTERIOR FINISHED SURFACES OF WALLS. ACTUAL UNIT BOUNDARIES, HOWEVER, MAY EXTEND TO INCLUDE SUCH UNMEASURED ITEMS AS DRYWALL, PLASTER, FLOORING, DOORS, AND WINDOWS. SEE CONDOMINIUM DECLARATION FOR SPECIFIC DETAILS.

### LEGEND

- G.C.E. = GENERAL COMMON ELEMENT
- L.C.E. = LIMITED COMMON ELEMENT
- F.E. = FLOOR ELEVATION
- C.E. = CEILING ELEVATION
- C.L. = CONVERTIBLE LAND
- L.C.E.R. = LIMITED COMMON ELEMENT RESIDENTIAL
- C.E.S. = COMMON ELEMENT STORAGE

**MADDOX**  
INCORPORATED  
ENGINEERS • SURVEYORS

100 PARK AVENUE  
ROCKVILLE, MARYLAND 20850-2699  
(301) 762-9001